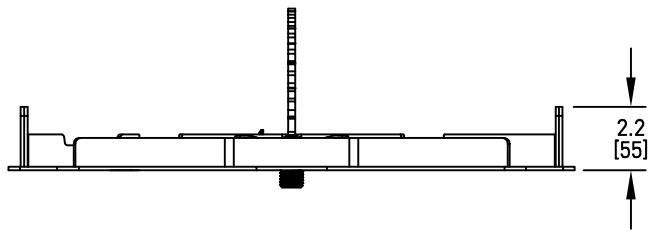
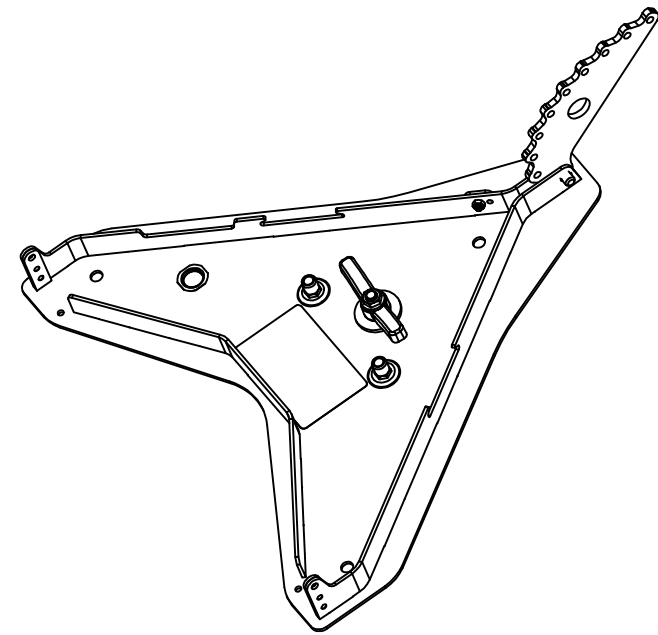
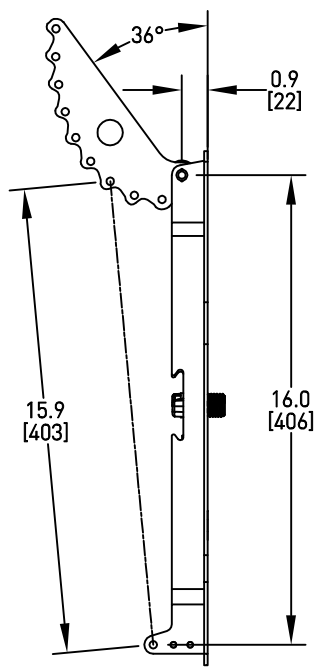
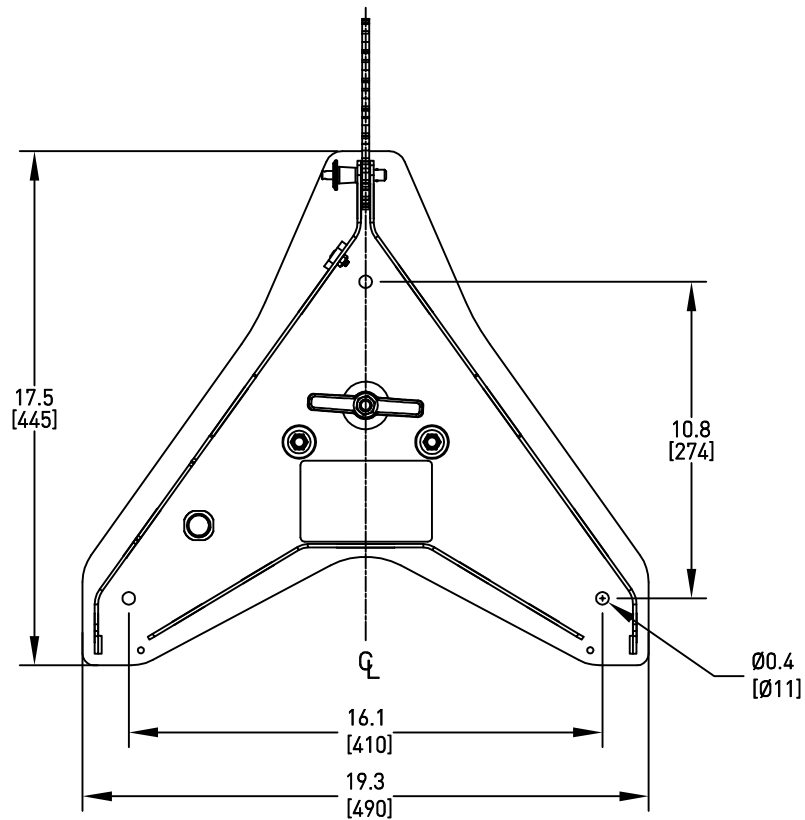


THESE DRAWINGS AND SPECIFICATIONS ARE THE PROPERTY OF JBL INCORPORATED. THEY ARE ISSUED IN STRICT CONFIDENCE AND SHALL NOT BE REPRODUCED OR USED AS THE BASIS FOR MANUFACTURE OR APPARATUS WITHOUT WRITTEN PERMISSION.

ALL MATERIAL SPECIFIED ON THIS DRAWING SHALL CONTINUALLY COMPLY WITH THE EFFECTIVE EU RoHS DIRECTIVE, CURRENTLY 2011/65/EU, INCLUDING ALL AMENDMENTS.

REVISIONS				
LTR	DESCRIPTION	DRFT	DATE	APPR
A	INITIAL RELEASE	KW	11/04/21	



4. ROOSTER COMB ANGLE SHOWN FOR ZERO DEGREE INCLINATION OF THE SPEAKER
3. MATERIAL: 3mm THICK STEEL WITH ANTI-CORROSION COATING
2. WEIGHT: 4.2 KG (9.3 LBS).
1. FINISH: BLACK POWDER COAT.

NOTES: (UNLESS OTHERWISE SPECIFIED)

**TOLERANCES**  
(UNLESS OTHERWISE SPECIFIED)

X.XX ± .063 INCH  
X.X ± .125 INCH

ANGULAR TOLERANCE OF 0°±30°

FRACTIONAL DIMENSIONS ± 1/32

\* DIMENSIONS ARE INCHES INCHES [MM]  
\* ALL DIMENSIONS ARE FINISHED DIMENSIONS  
\* DO NOT SCALE DRAWING

<b>HARMAN</b>		JBL Professional 8500 Balboa Blvd Northridge, CA 91329 USA	
TITLE CUSTOMER DRAWING: SRX906LA BP			
SIZE <b>A</b>	DRAWING NO.  1000368688		REV  <b>A</b>
SCALE NTS		SHEET 1	OF 1